



Believe the Unbelievable!®

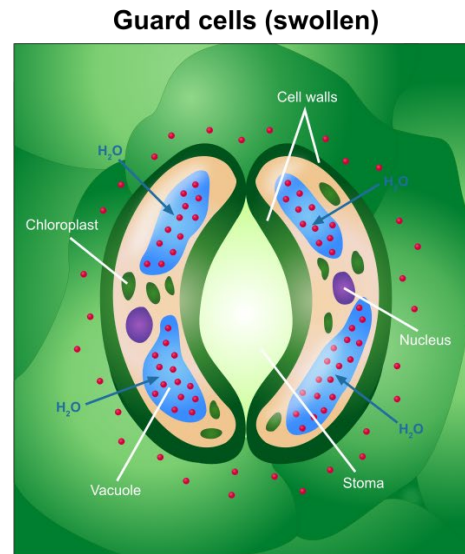
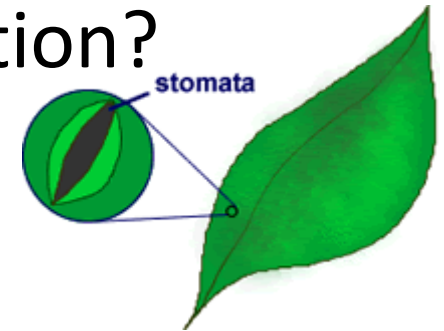
MANAGING TRANSPIRATION TO
MAXIMIZE RESULTS



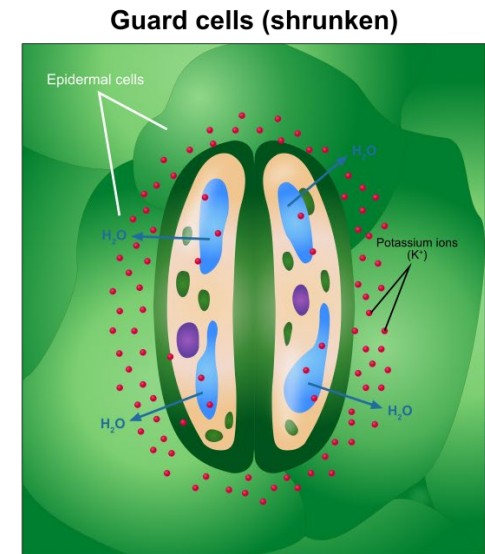
**Organisan**
corporation

Transpiration & Chitosan

- How do we know it affects Transpiration?
 - Stomatal response in 30-35 minutes
 - Reduces transpiration up to 50%
 - Several examples



Stoma opening

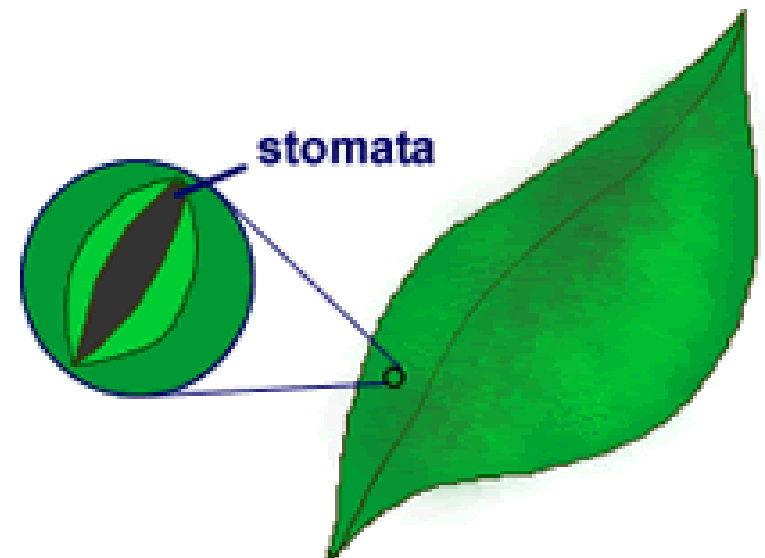
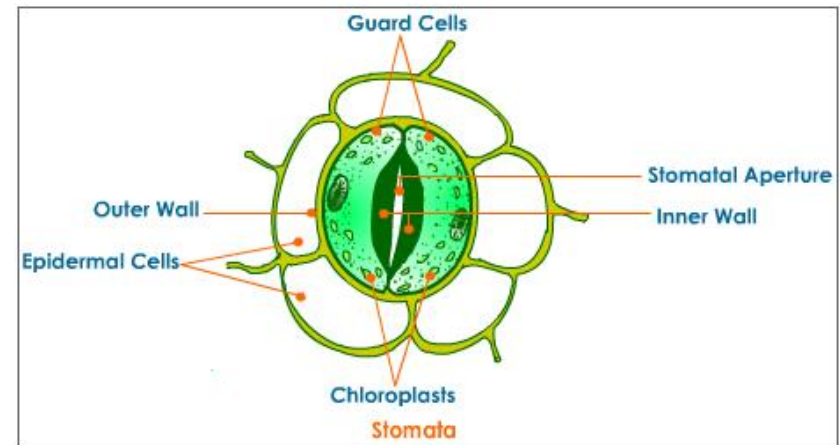
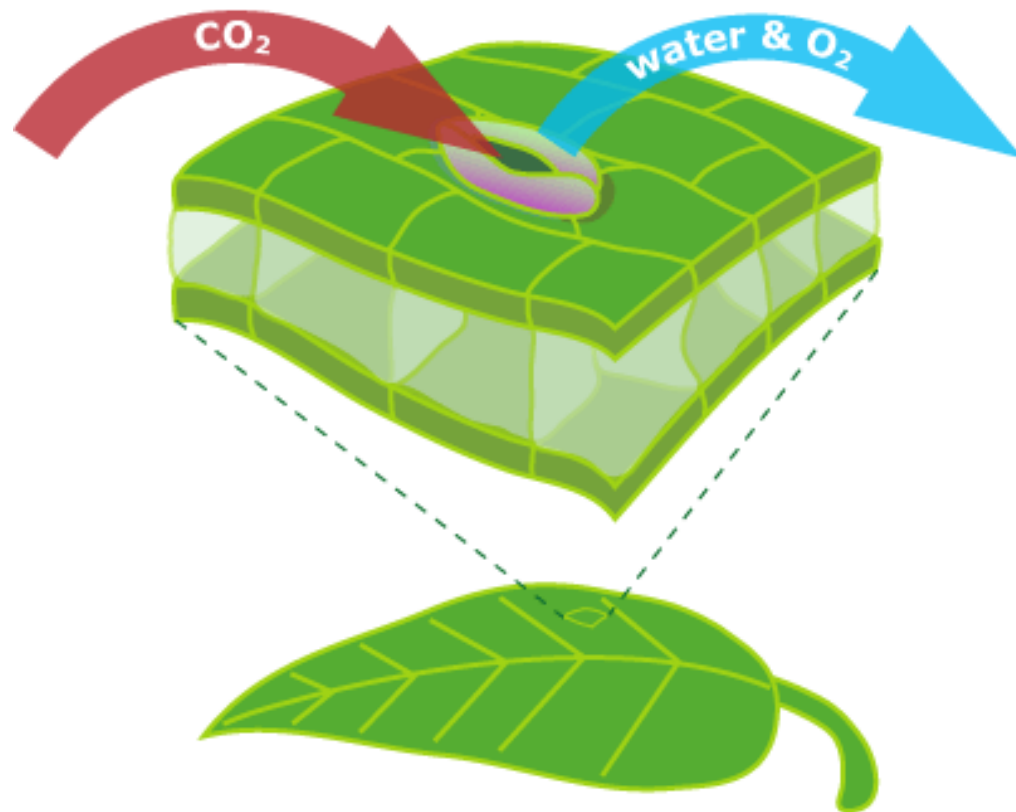


Stoma closing

Source: Guard Cell Wikipedia

Science of guard cells and stomatal opening and its effect on transpiration.

Carbon dioxide enters, while water and oxygen exit, through a leaf's stomata.



Soybean Seed and Chitosan

**Want more information
on Chitosan?**

**There are literally thousands of
scientific studies from around the
world available on the internet.**

**A quick google search on Chitosan
and your crop will produce reports.**

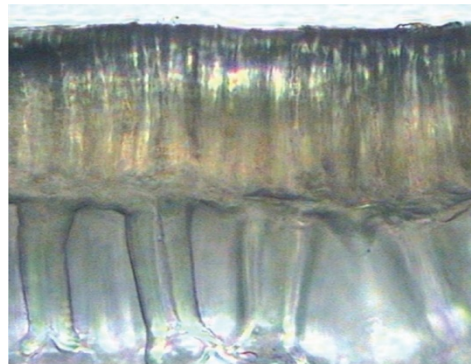


(a) Coated with NP

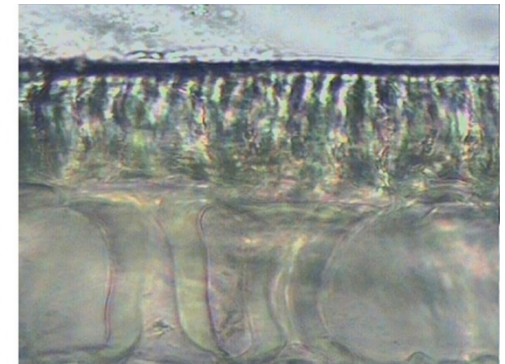


(b) CK

FIGURE 1: Contrast section photos of soybean seedling growth coated with NP and CK.



(a) Coated with NP



(b) CK

FIGURE 2: Contrast section photos of coated-seeds' and uncoated-seeds' surface membrane.

Source Hindawi Publishing Corporation, International Journal of Carbohydrate Chemistry
Volume 2012, Article ID 104565, 5 pages, doi:10.1155/2012/104565

Research Article **Application of Bioactive Coatings Based on Chitosan for Soybean Seed Protection.**

Why should you use a chitosan-based adjuvant*?

Sugar beet side by side test



**Results may vary and are not guaranteed. Test after test of various crops have shown when you use one of our adjuvants with your normal protocol of other treatments, the treated portion produces healthier plants and bigger and overall better yields.*

White beans side by side test



Transpiration makes a difference!



Overall, allowing the roots the opportunity to process anything that is put on them, creates an environment for better efficiency. When our products are used with other products, consistent results on treated areas include:

- * Root Mass: The roots are tighter, bigger, fuller and longer in all areas of the root ball.
- * Chlorophyll: The intensity of the green color in the plants stems is extremely evident.
- * Stem Diameter: In side by side tests, producers noticed significant overall diameter and fullness of the treated. It's easy to see how the treated is getting proliferation of the stems as opposed to the untreated
- * Overall Yield – Consistently larger and healthier than non treated areas



2018 Montana
Barley Field
Same Boy
Same Day
Treated – left
Untreated - right



Believe the Unbelievable!™

*We look forward to
helping you
MAXIMIZE RESULTS!*

Organisan
corporation

Sales:

Mark Nichols: 678-935-8120

John Hendrix: 601-383-3648

Tom Wood: 208-317-4580

Robin Borden: 601-624-4747

